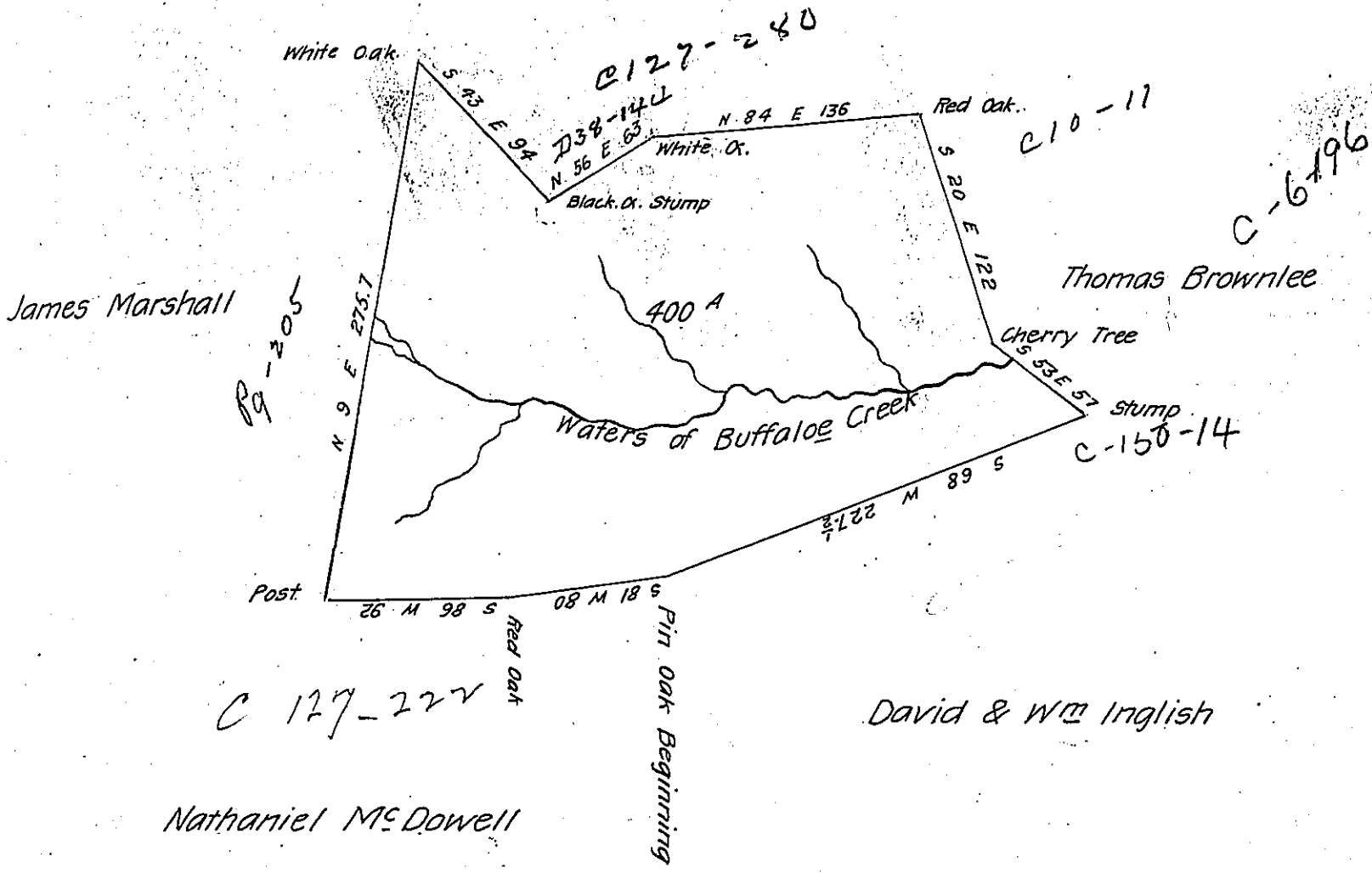


Henry Moore



A Draught of a tract of Land ^{re} Surveyed the 21st day of November 1803 by virtue of a Certificate for 400 acres granted to Jesse Hollingsworth Assignee of Alexander Douglass by the Virginia Commissioners appointed for adjusting the claims to unpatented Lands in the Counties of Monongalia Yohag^a and Ohio and duly entered with the County Surveyor (And in pursuance of an Order from the Board of Property of the State of Pennsylvania dated the 9th day of November 1803. Situate on the waters of Buffalo^a in Buffalo Township Washington County Called Marshall's Fancy Containing four hundred acres Strict Measure

Jonathan Leet D.S.

To Samuel Cochran Esquire

Surveyor General of Pennsylvania

Date of Entry the 19th Decem^r 1779

IN TESTIMONY that the above is a copy of the original remaining on file in the Department of Internal Affairs of Pennsylvania, made conformably to an Act of Assembly approved the 16th day of February, 1833, I have hereunto set my Hand and caused the Seal of said Department to be affixed at Harrisburg, this fifteenth day of February 1906

Joseph B. ...
 Secretary of Internal Affairs.